

**Som Supaparinya  
from Museion to  
Bolzano. Territories,  
Environment, and  
Community**

by Floriana Savino

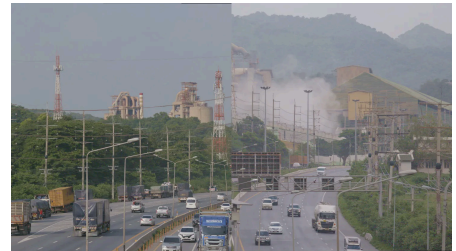
June 6, 2026

The landscape immortalized by **Som Supaparinya** (Chiang Mai, Thailand, 1973) represents the most precious living archive of a territorial history that thrives on stratification, fractures, conflicts, and sutures. From May 15th to June 14th, 2026, Museion **Bolzano** hosts the **documentary film** created by the artist based on a total immersion in the structural and landscape transformations that have affected the territories of Southeast Asia.

Between historical memory and disruptive transformations of the territory **MO NUM EN TS** (2025) investigates the extent of change at the gates of a time increasingly threatened by pollution and the harmful impact of wars and conflicts, scattered throughout the world.



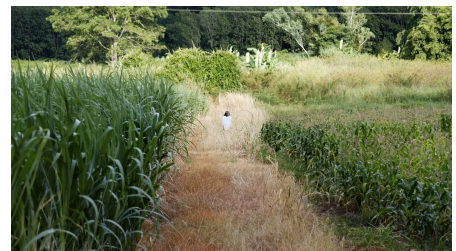
Som Supaparinya, *Mo num en ts*, video still. Courtesy of the artist.



Som Supaparinya, *Mo num en ts*, video still. Courtesy of the artist.



Som Supaparinya, *Mo num en ts*, video still. Courtesy of the artist.



Som Supaparinya, *Mo num en ts*, video still. Courtesy of the artist.

From the structural interventions begun during the Cold War years to the ever-increasing number of monuments symbolizing modernity, Supaparinya's gaze shifts between archival research and first-hand knowledge of the territory immortalized and captured for his enduring project.

If during the years of a veritable cultural war between the two hegemonic blocs, Thailand essentially embodied the outpost of a hypothetical, but certainly self-referential "*free world*", the field research of a pioneer of video installations like Som provides a timely and vivid restitution of the societal changes in the world's most complex and multifaceted agglomerations.

In the preciousness of a cinematic restitution, in praise of the most realistic and lively testimony, Som Supaparinya's project pays homage to the meticulous and active work of a mosaic of communities, participants in mutual aid and a participatory listening to the needs of others.

*In the important restitution of other landscapes* (often little known to the Western eye), the documentary project shines with the richness of a profound revelation.

The video, which after the current exhibition is preparing to enter the permanent collection of the South Tyrolean institution, was created using the *split screen* technique, that is, a precise presentation on the screen of multiple and different shots aimed at conveying the suture spaces and complexities of the chosen research subject.

By highlighting the importance of memory and developing a critical, timely, and honest approach to the vast array of histories and knowledge encountered in a rapidly and strenuously changing landscape, Som Supaparinya's work and dedication pay homage to the often anonymous stories of landscapes and industrious small *ant communities* around the world that have worked to build modernity, as well as the efforts being

made today to preserve ecosystems, increasingly enslaved by the greed of those in power and the arrogant and substantial indifference of so many.



Exhibition view *Mo num en ts* by Som Supaparinya, 2026, Museion. Photo: Tiberio Sorvillo



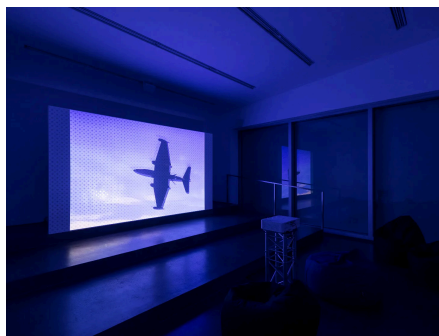
Exhibition view *Mo num en ts* by Som Supaparinya, 2026, Museion. Photo: Tiberio Sorvillo



Exhibition view *Mo num en ts* by Som Supaparinya, 2026, Museion. Photo: Tiberio Sorvillo



Exhibition view *Mo num en ts* by Som Supaparinya, 2026, Museion. Photo: Tiberio Sorvillo



Exhibition view *Mo num en ts* by Som Supaparinya, 2026, Museion. Photo: Tiberio Sorvillo



Exhibition view *Mo num en ts* by Som Supaparinya, 2026, Museion. Photo: Tiberio Sorvillo

**For further information:**

[www.museion.it/it/news/12343-som-supaparinya-mo-num-en-ts](http://www.museion.it/it/news/12343-som-supaparinya-mo-num-en-ts)